

Dominant Inheritance

Information Guide

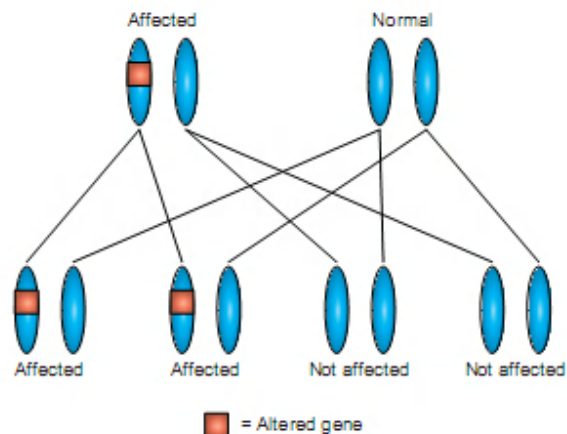
What are genes?

Genes are the unique set of instructions inside our bodies which make each of us an individual. There are many thousands of different genes, each carrying a different instruction. If a gene is altered, it can cause a genetic condition or disease. This gene alteration is sometimes known as a mutation.

We have two copies of each gene. One copy is inherited from each of our parents. When we have children, we pass on only one copy of each of our genes.

What does dominant inheritance mean?

Some genetic conditions are passed on in the family in a dominant way. These conditions are caused by an alteration of one copy of a gene. They are called dominant because the altered copy of the gene is dominant over the other copy of the gene.



Autosomal Dominant Inheritance

Having children

If a parent carries an altered gene for a dominant condition, each of their children has a 50%, or 1 in 2, chance of inheriting the altered gene and being affected by the condition. For each child, regardless of their sex, the risk is the same = 50%.

In some dominant conditions, it is possible to inherit an altered gene without showing any symptoms of the condition. Even within a family, some individuals may be affected by the same dominant condition in different ways.

Some dominant conditions are known as 'late onset disorders'. In other words, they only affect individuals in adulthood.

In some families, an isolated case of a dominant disorder may be the result of a new mutation (a change which arises for the first time) in either the egg or the sperm that went to make that child.

For additional information or support

If you have any further questions about inheritance, please contact:

Genetic Medicine

6th Floor, St Mary's Hospital, Oxford Road, Manchester M13 9WL

Telephone 0161 276 6506

Fax 0161 276 6145

Department staffed Monday–Friday, 9.00am to 5.00pm.

We would like to acknowledge our Clinical Genetics colleagues at Guy's and St Thomas' Hospital NHS Trust who designed and wrote the original version of this leaflet.

Do you have difficulty speaking or understanding English ?

আপনি কি ইংরেজীতে বুঝতে কিংবা বুঝাতে পেরেছেন ? (BENGALI)

क्या आपको अंग्रेजी बोलने या समझने में कठिनाई है ? (HINDI)

તમે ભાષા કારણે વાતચીત કરવામાં મુશ્કેલી આવે છે ? (GUJARATI)

ਕਿ ਤੁਹਾਨੂੰ ਅੰਗ੍ਰੇਜ਼ੀ ਬੋਲਣ ਜਾਂ ਸਮਝਣ ਵਿਚ ਦਿੱਕਤ ਹੈ ? (PUNJABI)

Miyey ku adagtahay inaad ku hadasho Ingriisida aad sahamto (SOMALI)

هل لديك مشاكل في فهم اوالتكلم باللغة الانجليزية ؟ (ARABIC)

你有困難講英語或明白英語嗎？ (CANTONESE)

کیا آپ کو انگریزی سمجھنے اور سمجھانے میں دقت پیش آتی ہے؟ (URDU)

Telephone 0161 276 6202 / 6342

Please let us know if you would like this leaflet in another format (e.g. large print, Braille, audio, British Sign Language video/DVD) or in another language.